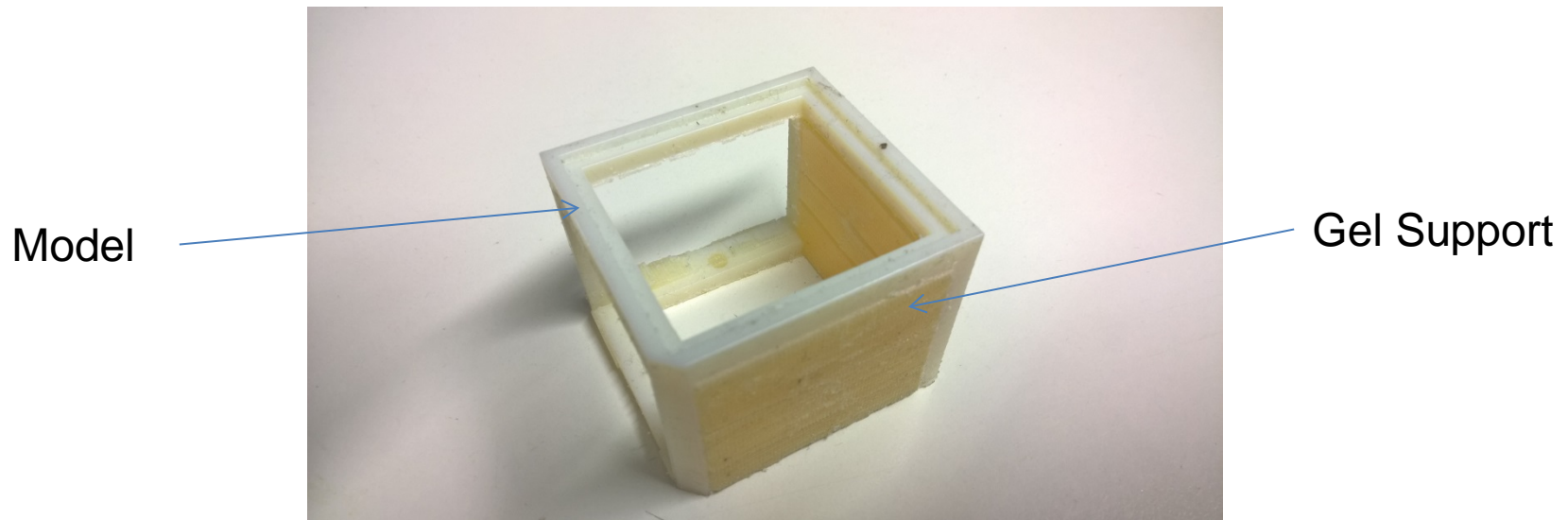


# **Support removal after 3d printing\***

\*Connex 500 only. Support is removed for you on Dimension

Philip Dixon  
Technical Instructor

The 3d Printers in the design school both use support material whilst building your structure.

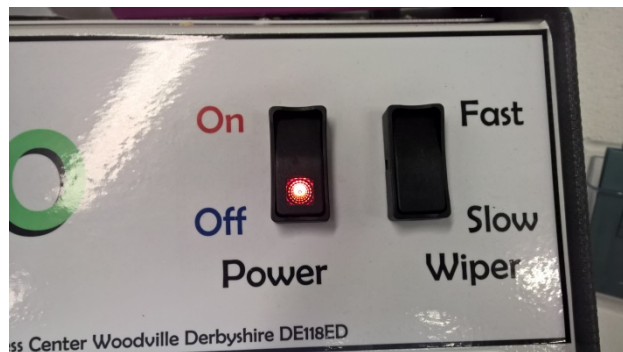


If your part is reasonably strong, it is quite easy to remove the support by using the water blast cabinet. If you are worried about breaking your part then you can pick off the largest parts and use a brush to remove the remainder. Leaving your part in water for a few hours will soften the support before removal. Any residue can be removed in a 10% caustic soda solution.



The water blast cabinet is situated in LDS.0.07 (the CNC workshop). It should only be used to remove support, it is not for cleaning parts!

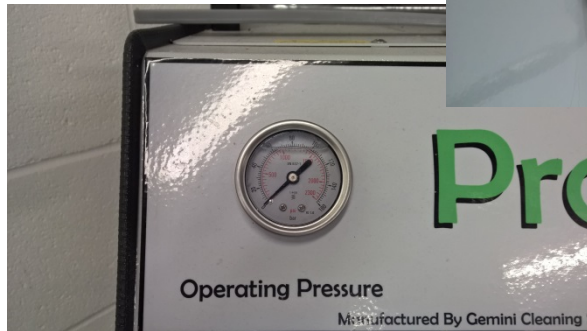
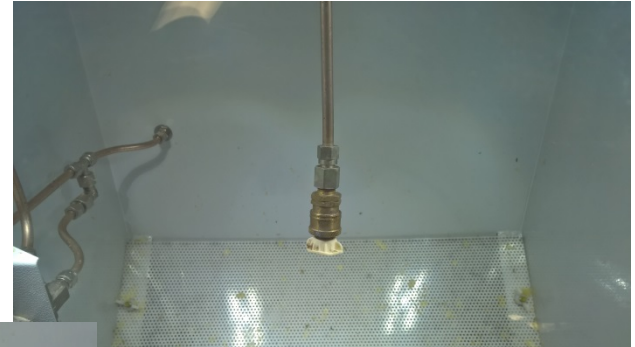
Turn on the machine at the isolator by pushing the blue bar upwards. Turn it off after use.



Make sure the power is set to on at the rocker switch located on the front panel.

There are 2 nozzles in the cabinet, controlled by the lever next to the blue adjustment knob. The upper position is the lower pressure fixed line, the lower position is a higher pressure flexible line.

The blue knob will adjust the jet pressure



Do not press the foot pedal without holding on to the flexible line (if in use)!



To operate the machine, there is a foot switch, simply press to actuate the water. If you are using the flexible line, make sure you have hold of it before you press the foot pedal.

Pass your part under the jet and it should push off the support. If your part is delicate then hold it further away from the nozzle or reduce the pressure using the blue adjustment Knob.



After use, please turn off the machine and leave the front open and gloves outside the machine.



**Use of the water blaster is at your own risk.**